

STANDARD MAP NUMBER  
 8650-11344



**SmartMap**  
 An External Product of  
 SmartMap Information Services  
 Based upon an extraction from the  
 Digital Cadastral Data Base

MAP WINDOW POSITION &  
 NEAREST LOCATION

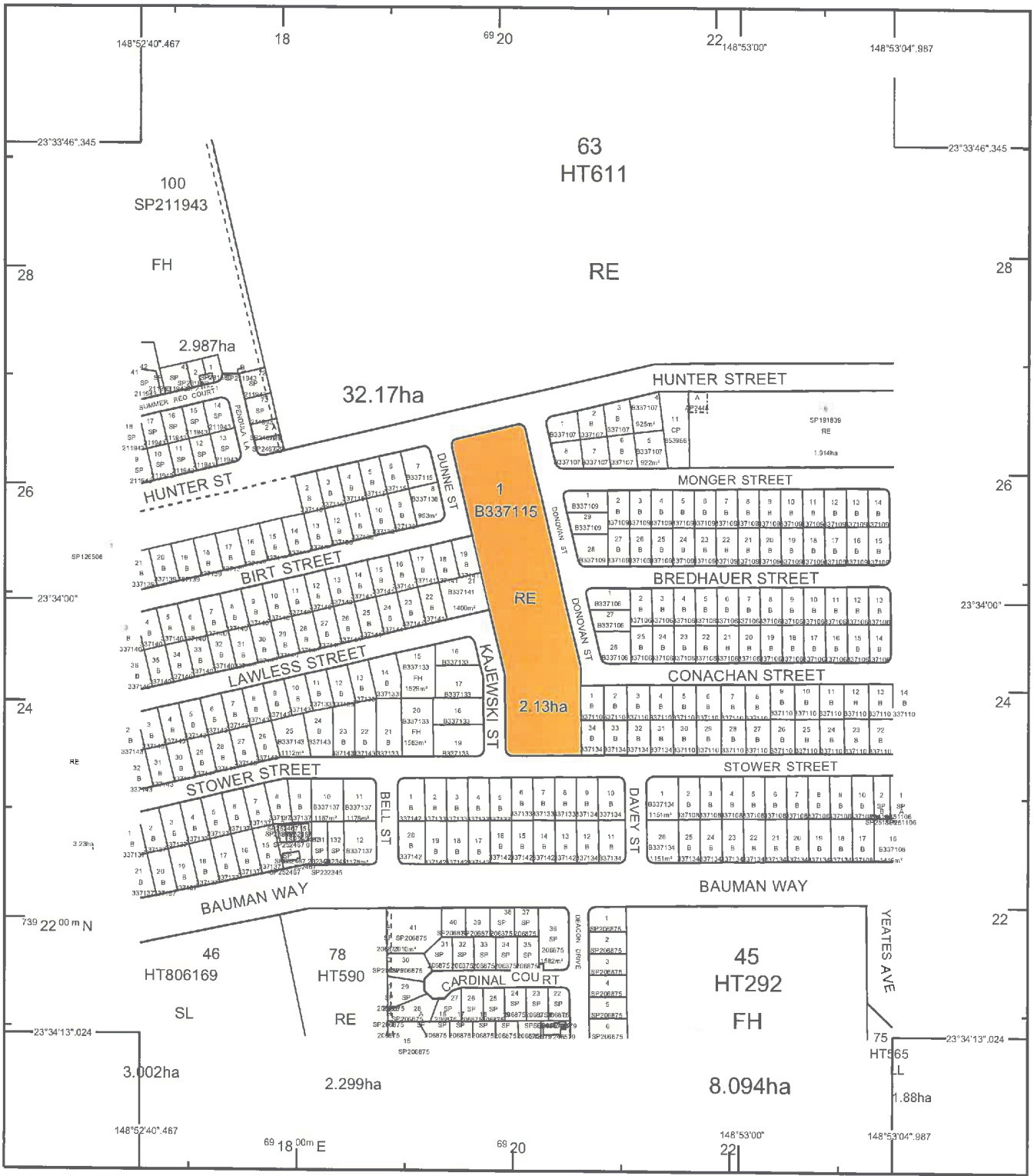


SUBJECT PARCEL DESCRIPTION	
DCDB	
Lot/Plan	1/SP126508
Area/Volume	3.23ha
Tenure	RESERVE
Local Government	CENTRAL HIGHLANDS REGIONAL
Locality	BLACKWATER
Parish	BLACKWATER
County	HUMBOLDT
Segment/Parcel	39810/115

CLIENT SERVICE STANDARDS	
PRINTED (dd/mm/yyyy)	08/08/2014
DCDB	07/08/2014
Users of the information recorded in this document (the Information) accept all responsibility and risk associated with the use of the Information and should seek independent professional advice in relation to dealings with property.	
Despite Department of Natural Resources and Mines (DNRM)'s best efforts, DNRM makes no representations or warranties in relation to the Information, and, to the extent permitted by law, exclude or limit all warranties relating to correctness, accuracy, reliability, completeness or currency and all liability for any direct, indirect and consequential claims, losses, damages and expenses incurred in any way (including but not limited to that arising from negligence) in connection with any use of or reliance on the Information.	
For further information on SmartMap products visit <a href="http://nrw.qld.gov.au/property/mapping/blinmap">http://nrw.qld.gov.au/property/mapping/blinmap</a>	



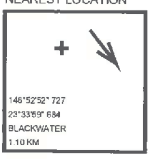
(c) The State of Queensland,  
 (Department of Natural  
 Resources and Mines) 2014.



STANDARD MAP NUMBER  
 8650-11344



**SmartMap**  
 An External Product of  
 SmartMap Information Services  
 Based upon an extraction from the  
 Digital Cadastral Data Base

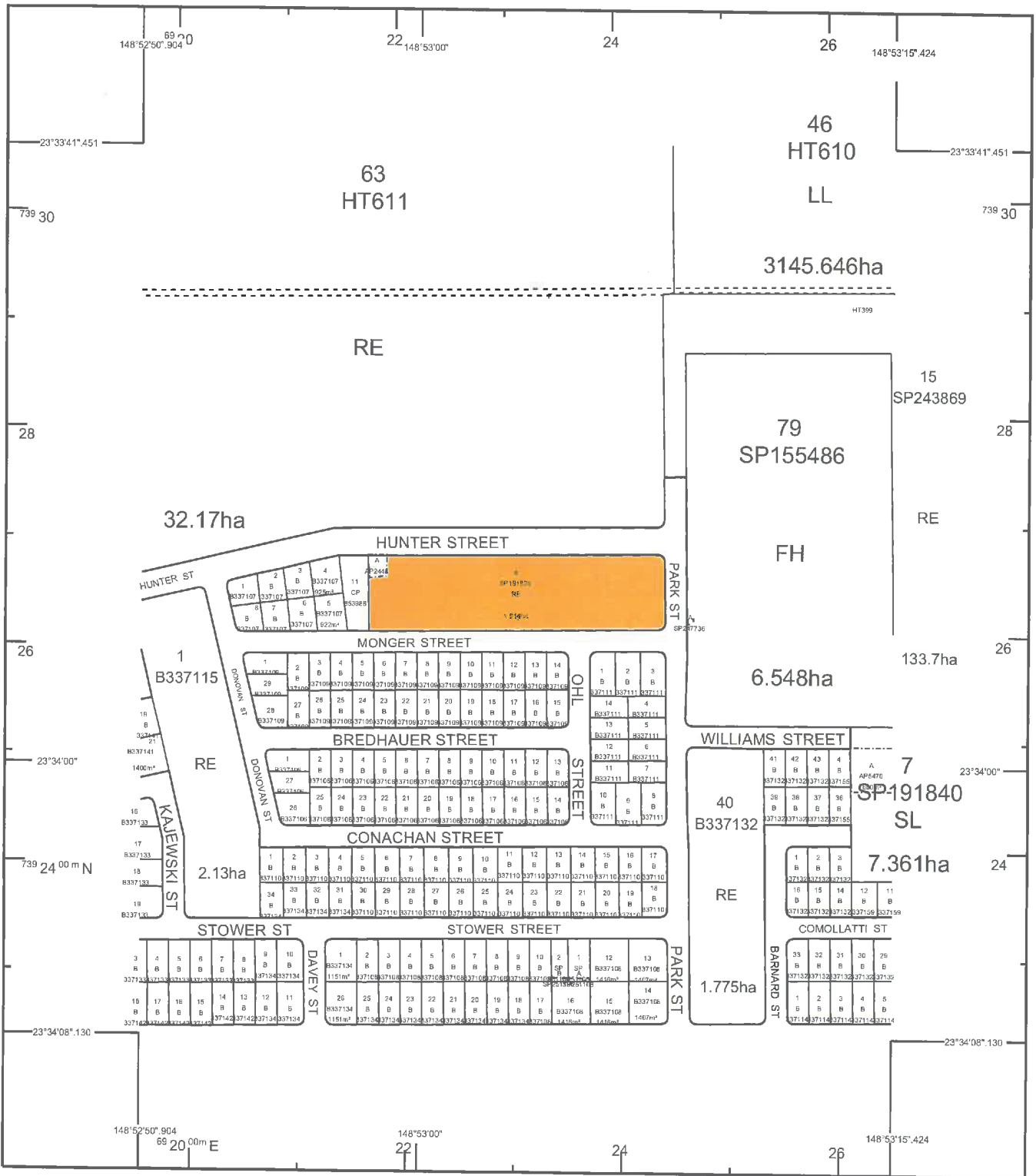


SUBJECT PARCEL DESCRIPTION	
DCDB	
Lot/Plan	1/B337115
Area/Volume	2.13ha
Tenure	RESERVE
Local Government	CENTRAL HIGHLANDS REGIONAL
Locality	BLACKWATER
Parish	BLACKWATER
County	HUMBOLDT
Segment/Parcel	39810/1

CLIENT SERVICE STANDARDS	
PRINTED (dd/mm/yyyy)	08/08/2014
DCDB	07/08/2014
Users of the information recorded in this document (the Information) accept all responsibility and risk associated with the use of the Information and should seek independent professional advice in relation to dealings with property.	
Despite Department of Natural Resources and Mines (DNRM)'s best efforts, DNRM makes no representations or warranties in relation to the Information, and, to the extent permitted by law, exclude or limit all warranties relating to correctness, accuracy, reliability, completeness or currency and all liability for any direct, indirect and consequential claims, losses, damages and expenses incurred in any way (including but not limited to that arising from negligence) in connection with any use of or reliance on the Information	
For further information on SmartMap products visit <a href="http://nrm.qld.gov.au/property/mapping/blinmap">http://nrm.qld.gov.au/property/mapping/blinmap</a>	



(c) The State of Queensland,  
 (Department of Natural  
 Resources and Mines) 2014.



STANDARD MAP NUMBER  
 8650-11344



MAP WINDOW POSITION &  
 NEAREST LOCATION



SUBJECT PARCEL DESCRIPTION

DCDB	
Lot/Plan	6/SP191639
Area/Volume	1.914ha
Tenure	RESERVE
Local Government	CENTRAL HIGHLANDS REGIONAL
Locality	BLACKWATER
Parish	BLACKWATER
County	HUMBOLDT
Segment/Parcel	39809/168

CLIENT SERVICE STANDARDS

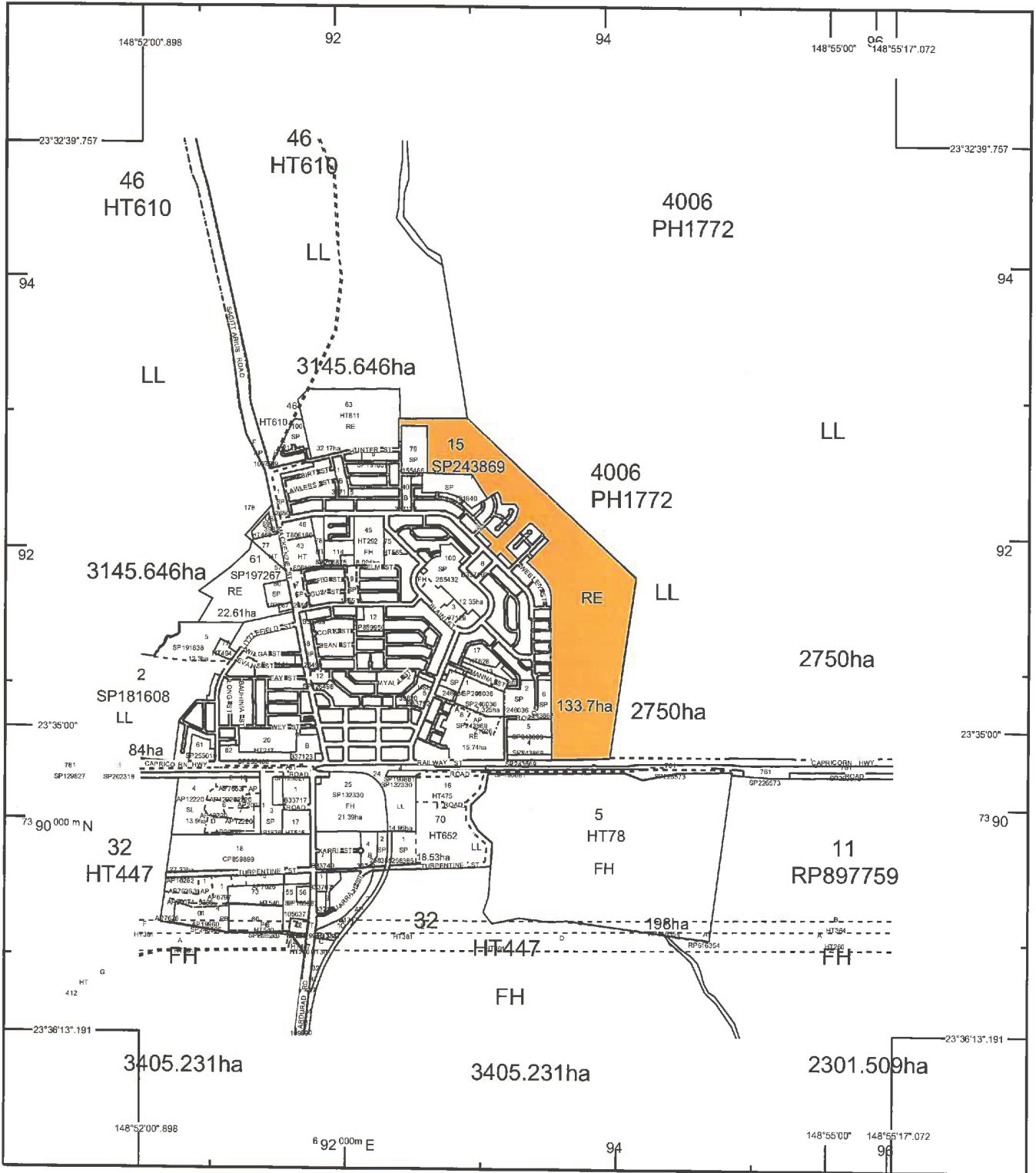
PRINTED (dd/mm/yyyy)	12/09/2014
DCDB	11/08/2014
Users of the information recorded in this document (the Information) accept all responsibility and risk associated with the use of the Information and should seek independent professional advice in relation to dealings with property.	
Despite Department of Natural Resources and Mines (DNRM)'s best efforts, DNRM makes no representations or warranties in relation to the Information, and, to the extent permitted by law, exclude or limit all warranties relating to correctness, accuracy, reliability, completeness or currency and all liability for any direct, indirect and consequential costs, losses, damages and expenses incurred in any way (including but not limited to that arising from negligence) in connection with any use of or reliance on the information.	
For further information on SmartMap products visit <a href="http://nrw.qld.gov.au/property/mapping/binmap">http://nrw.qld.gov.au/property/mapping/binmap</a>	



An External Product of  
 SmartMap Information Services  
 Based upon an extraction from the  
 Digital Cadastral Data Base



Queensland  
 Government  
 (c) The State of Queensland,  
 (Department of Natural  
 Resources and Mines) 2014.



STANDARD MAP NUMBER  
 8650-11341



MAP WINDOW POSITION & NEAREST LOCATION



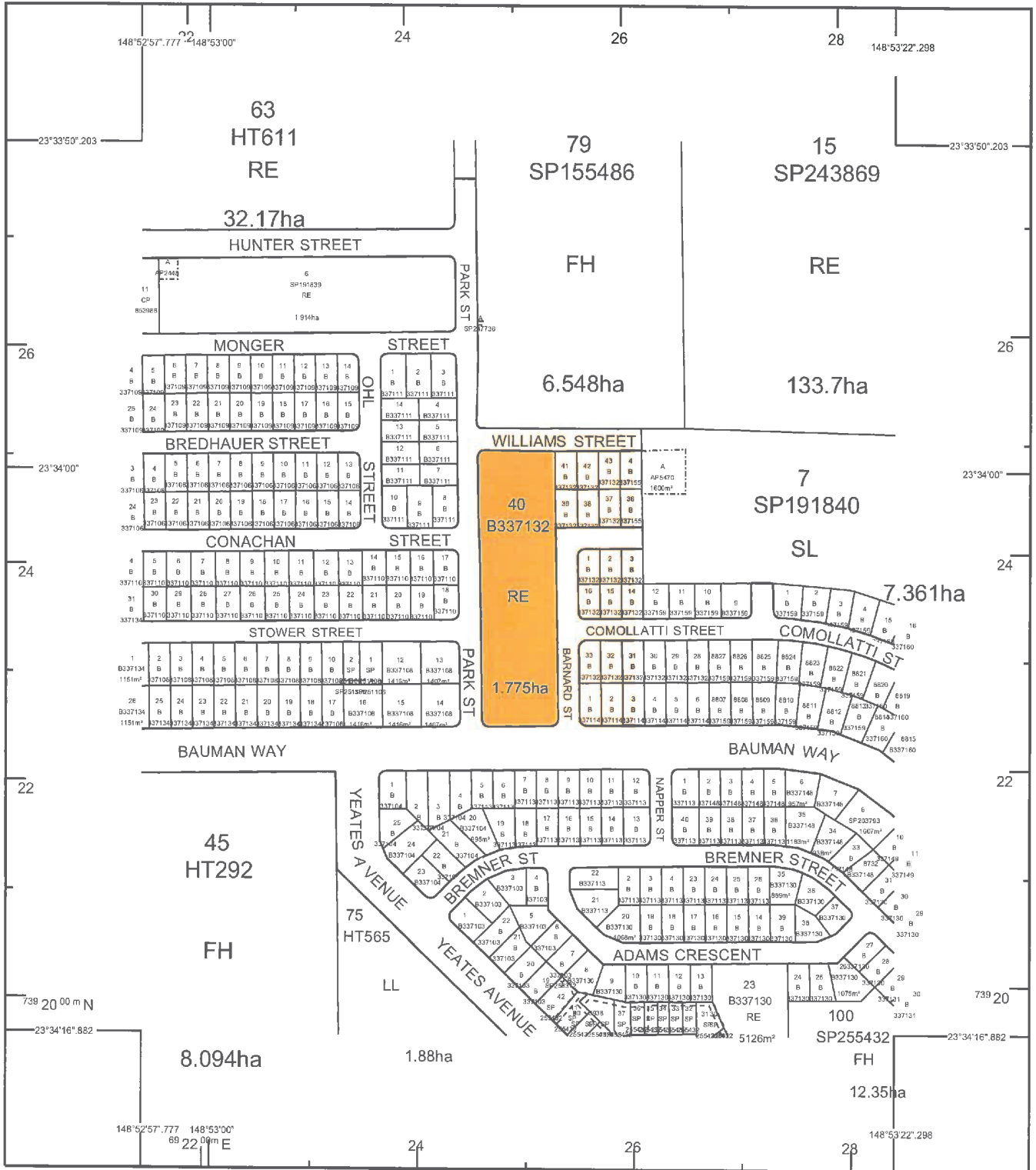
SUBJECT PARCEL DESCRIPTION	
DCDB	15/SP243869
Lot/Plan	133.7ha
Area/Volume	RESERVE
Tenure	CENTRAL HIG-LANDS REGIONAL
Local Government	BLACKWATER
Locality	BLACKWATER
Parish	HUMBOLDT
County	63008/164
Segment/Parcel	

CLIENT SERVICE STANDARDS	
PRINTED (dd/mm/yyyy)	12/08/2014
DCDB	11/08/2014 (Lots with an area less than 1.000ha are not shown)
Users of the information recorded in this document (the Information) accept all responsibility and risk associated with the use of the Information and should seek independent professional advice in relation to dealings with property.	
Despite Department of Natural Resources and Mines(DNRM)'s best efforts, DNRM makes no representations or warranties in relation to the Information, and, to the extent permitted by law, exclude or limit all warranties relating to correctness, accuracy, reliability, completeness or currency and all liability for any direct, indirect and consequential costs, losses, damages and expenses incurred in any way (including but not limited to that arising from negligence) in connection with any use of or reliance on the Information	
For further information on SmartMap products visit <a href="http://nrm.qld.gov.au/property/mapping/blinmap">http://nrm.qld.gov.au/property/mapping/blinmap</a>	

**SmartMap**  
 An External Product of  
 SmartMap Information Services  
 Based upon an extraction from the  
 Digital Cadastral Data Base



(c) The State of Queensland,  
 (Department of Natural  
 Resources and Mines) 2014.



STANDARD MAP NUMBER  
 8650-11344



MAP WINDOW POSITION & NEAREST LOCATION



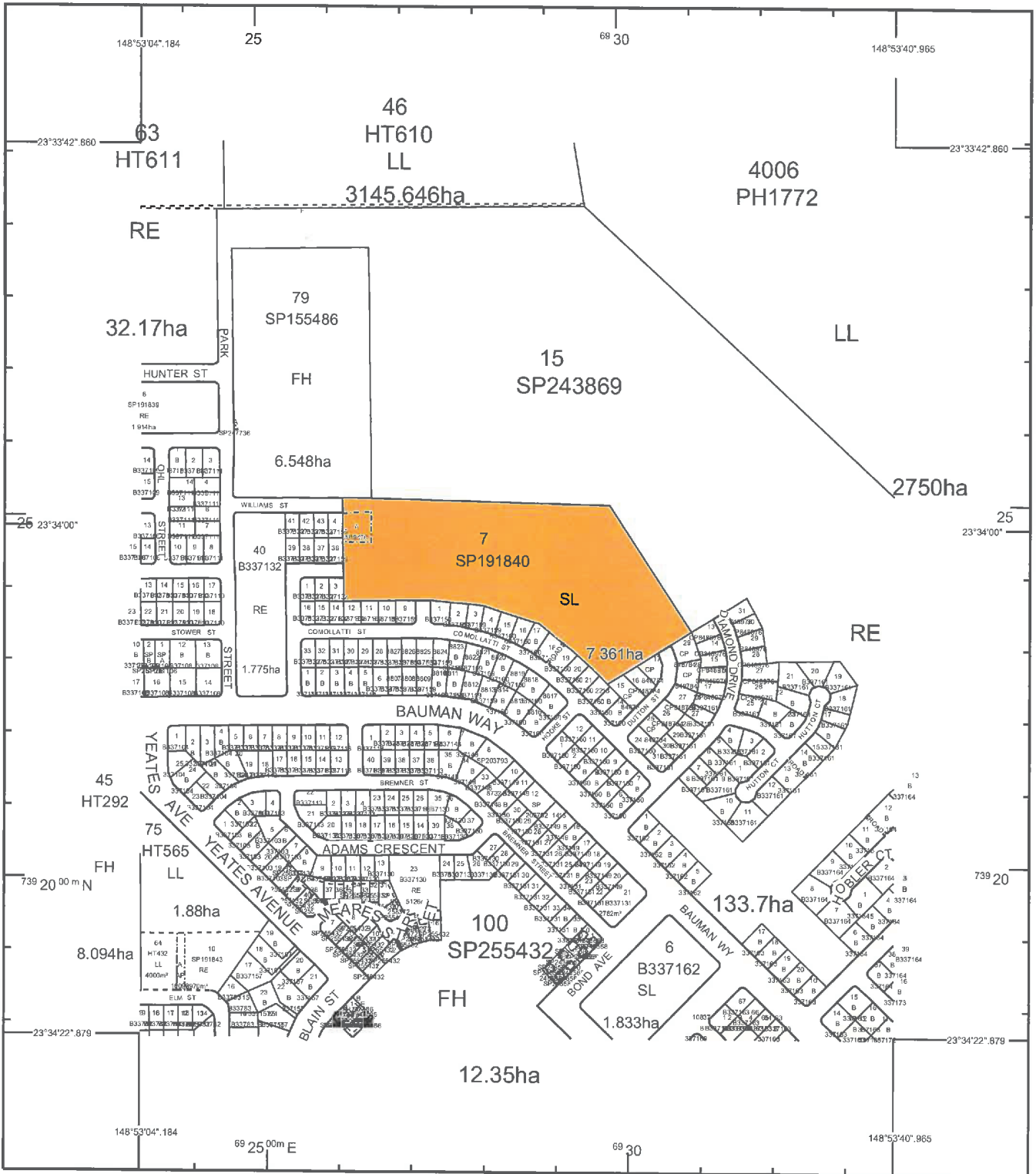
SUBJECT PARCEL DESCRIPTION	
DCDB	40/B337132
Lot/Plan	1.775ha
Area/Volume	RESERVE
Tenure	CENTRAL HIGHLANDS REGIONAL
Local Government	BLACKWATER
Locality	BLACKWATER
Parish	HUMBOLDT
County	39808/34
Segment/Parcel	

CLIENT SERVICE STANDARDS	
PRINTED (dd/mm/yyyy)	07/08/2014
DCDB	06/08/2014
Users of the information recorded in this document (the Information) accept all responsibility and risk associated with the use of the Information and should seek independent professional advice in relation to dealings with property.	
Despite Department of Natural Resources and Mines (DNRM)'s best efforts, DNRM makes no representations or warranties in relation to the Information, and, to the extent permitted by law, exclude or limit all warranties relating to correctness, accuracy, reliability, completeness or currency and all liability for any direct, indirect and consequential losses, damages and expenses incurred in any way (including but not limited to that arising from negligence) in connection with any use of or reliance on the Information.	
For further information on SmartMap products visit <a href="http://nrm.qld.gov.au/property/mapping/olnmap">http://nrm.qld.gov.au/property/mapping/olnmap</a>	

**SmartMap**  
 An External Product of  
 SmartMap Information Services  
 Based upon an extraction from the  
 Digital Cadastral Data Base



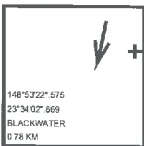
(c) The State of Queensland,  
 (Department of Natural  
 Resources and Mines) 2014.



STANDARD MAP NUMBER  
 8650-11344



MAP WINDOW POSITION & NEAREST LOCATION



SUBJECT PARCEL DESCRIPTION	
DCDB Lot/Plan	7/SP191840
Area/Volume	7.361ha
Tenure	STATE LAND
Local Government	CENTRAL HIGHLANDS REGIONAL
Locality	BLACKWATER
Parish	BLACKWATER
County	HUMBOLDT
Segment/Parcel	39908/609

CLIENT SERVICE STANDARDS	
PRINTED (dd/mm/yyyy)	08/08/2014
DCDB	07/08/2014
Users of the information recorded in this document (the Information) accept all responsibility and risk associated with the use of the Information and should seek independent professional advice in relation to dealings with property.	
Despite Department of Natural Resources and Mines (DNRM)'s best efforts, DNRM makes no representations or warranties in relation to the Information, and, to the extent permitted by law, exclude or limit all warranties relating to correctness, accuracy, reliability, completeness or currency and all liability for any direct, indirect and consequential arising, losses, damages and expenses incurred in any way (including but not limited to that arising from negligence) in connection with any use of or reliance on the Information.	
For further information on SmartMap products visit <a href="http://nrm.qld.gov.au/property/mapping/binmap">http://nrm.qld.gov.au/property/mapping/binmap</a>	

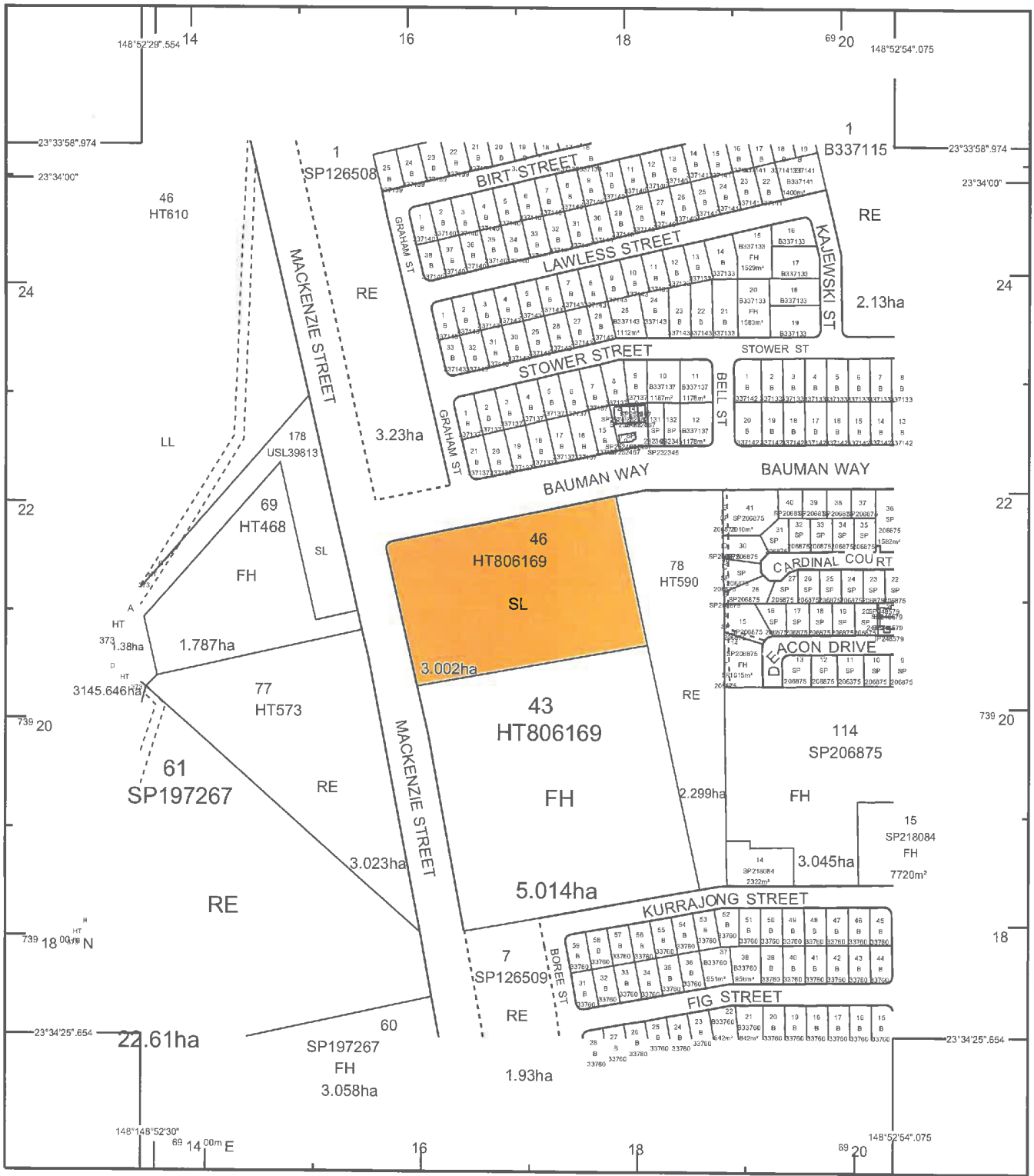
**SmartMap**

An External Product of  
 SmartMap Information Services  
 Based upon an extraction from the  
 Digital Cadastral Data Base



Queensland  
 Government

(c) The State of Queensland,  
 (Department of Natural  
 Resources and Mines) 2014.



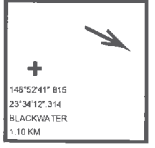
STANDARD MAP NUMBER  
 8650-11344



**SmartMap**  
 An External Product of  
 SmartMap Information Services

Based upon an extraction from the  
 Digital Cadastral Data Base

MAP WINDOW POSITION &  
 NEAREST LOCATION



SUBJECT PARCEL DESCRIPTION	
DCDB	46/HT806169
Lot/Plan	3.002ha
Area/Volume	STATE LAND
Tenure	CENTRAL HIGHLANDS REGIONAL
Local Government	BLACKWATER
Locality	BLACKWATER
Parish	HUMBOLDT
County	39813/175
Segment/Parcel	

CLIENT SERVICE STANDARDS	
PRINTED (dd/mm/yyyy)	08/08/2014
DCDB	07/08/2014
Users of the information recorded in this document (the Information) accept all responsibility and risk associated with the use of the Information and should seek independent professional advice in relation to dealings with property.	
Despite Department of Natural Resources and Mines (DNRM)'s best efforts, DNRM makes no representations or warranties in relation to the Information, and, to the extent permitted by law, exclude or limit all warranties relating to correctness, accuracy, reliability, completeness or currency and all liability for any direct, indirect and consequential castings, losses, damages and expenses incurred in any way (including but not limited to that arising from negligence) in connection with any use of or reliance on the Information	
For further information on SmartMap products visit <a href="http://nrw.qld.gov.au/property/mapping/birmap">http://nrw.qld.gov.au/property/mapping/birmap</a>	



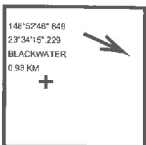
Queensland  
 Government  
 (c) The State of Queensland,  
 (Department of Natural  
 Resources and Mines) 2014.



STANDARD MAP NUMBER  
 8650-11344



MAP WINDOW POSITION & NEAREST LOCATION



SUBJECT PARCEL DESCRIPTION

DCDB Lot/Plan	78/HT590
Area/Volume	2.299ha
Tenure	RESERVE
Local Government	CENTRAL HIGHLANDS REGIONAL
Locality	BLACKWATER
Parish	BLACKWATER
County	HUMBOLDT
Segment/Parcel	39813/15

CLIENT SERVICE STANDARDS

PRINTED (dd/mm/yyyy) 08/08/2014

DCDB 07/08/2014

Users of the information recorded in this document (the Information) accept all responsibility and risk associated with the use of the Information and should seek independent professional advice in relation to dealings with property.

Despite Department of Natural Resources and Mines (DNRM)'s best efforts, DNRM makes no representations or warranties in relation to the Information, and, to the extent permitted by law, exclude or limit all warranties relating to correctness, accuracy, reliability, completeness or currency and all liability for any direct, indirect and consequential costs, losses, damages and expenses incurred in any way (including but not limited to that arising from negligence) in connection with any use of or reliance on the Information.

For further information on SmartMap products visit <http://nrw.qld.gov.au/property/mapping/olnmap>

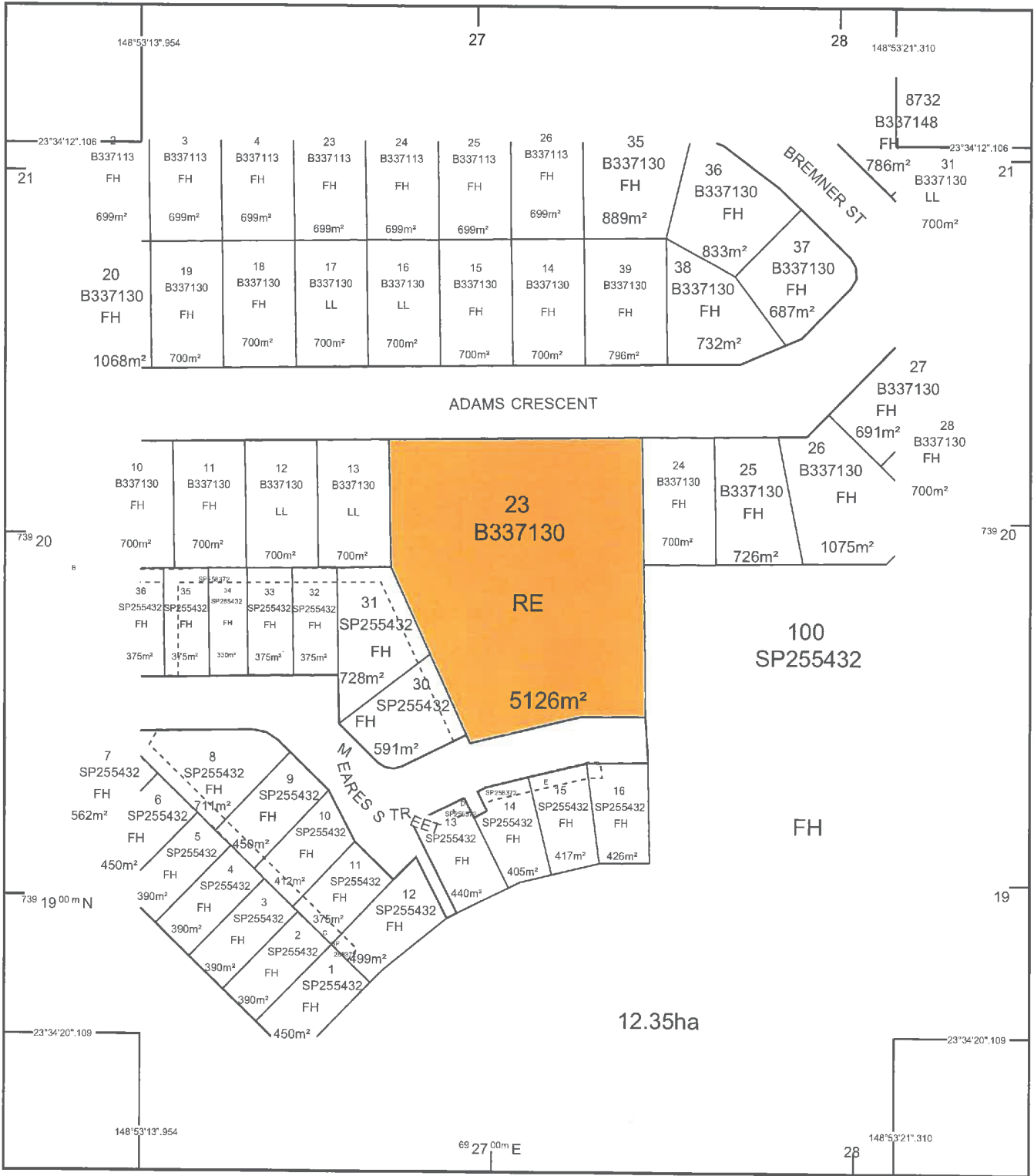


An External Product of SmartMap Information Services  
 Based upon an extraction from the Digital Cadastral Data Base



(c) The State of Queensland, (Department of Natural Resources and Mines) 2014.

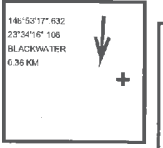




STANDARD MAP NUMBER  
 8650-11344



MAP WINDOW POSITION & NEAREST LOCATION



SUBJECT PARCEL DESCRIPTION

DCDB	
Lot/Plan	23/B337130
Area/Volume	5126m²
Tenure	RESERVE
Local Government	CENTRAL HIGHLANDS REGIONAL
Locality	BLACKWATER
Parish	BLACKWATER
County	HUMBOLDT
Segment/Parcel	39811/66

CLIENT SERVICE STANDARDS

PRINTED (dd/mm/yyyy) 08/08/2014

DCDB 07/08/2014

Users of the information recorded in this document (the Information) accept all responsibility and risk associated with the use of the Information and should seek independent professional advice in relation to dealings with property.

Despite Department of Natural Resources and Mines (DNRM)'s best efforts, DNRM makes no representations or warranties in relation to the Information, and, to the extent permitted by law, exclude or limit all warranties relating to correctness, accuracy, reliability, completeness or currency and all liability for any direct, indirect and consequential costs, losses, damages and expenses incurred in any way (including but not limited to that arising from negligence) in connection with any use of or reliance on the Information

For further information on SmartMap products visit <http://hrw.qld.gov.au/property/mapping/blinmap>

**SmartMap**  
 An External Product of  
 SmartMap Information Services  
 Based upon an extraction from the  
 Digital Cadastral Data Base



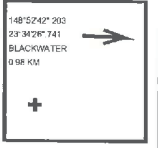
(c) The State of Queensland,  
 (Department of Natural  
 Resources and Mines) 2014.



STANDARD MAP NUMBER  
 8650-11344



MAP WINDOW POSITION & NEAREST LOCATION



SUBJECT PARCEL DESCRIPTION	
DCDB	7/SP126509
Lot/Plan	1.93ha
Area/Volume	RESERVE
Tenure	CENTRAL HIGHLANDS REGIONAL
Local Government	BLACKWATER
Locality	BLACKWATER
Parish	HUMBOLDT
County	39813131
Segment/Parcel	

CLIENT SERVICE STANDARDS

PRINTED (dd/mm/yyyy) 08/08/2014

DCDB 07/08/2014

Users of the information recorded in this document (the Information) accept all responsibility and risk associated with the use of the Information and should seek independent professional advice in relation to dealings with property.

Despite Department of Natural Resources and Mines (DNRM)'s best efforts, DNRM makes no representations or warranties in relation to the Information, and, to the extent permitted by law, exclude or limit all warranties relating to correctness, accuracy, reliability, completeness or currency and all liability for any direct, indirect and consequential costs, losses, damages and expenses incurred in any way (including but not limited to that arising from negligence) in connection with any use of or reliance on the Information

**SmartMap**

An External Product of SmartMap Information Services  
 Based upon an extraction from the Digital Cadastral Data Base

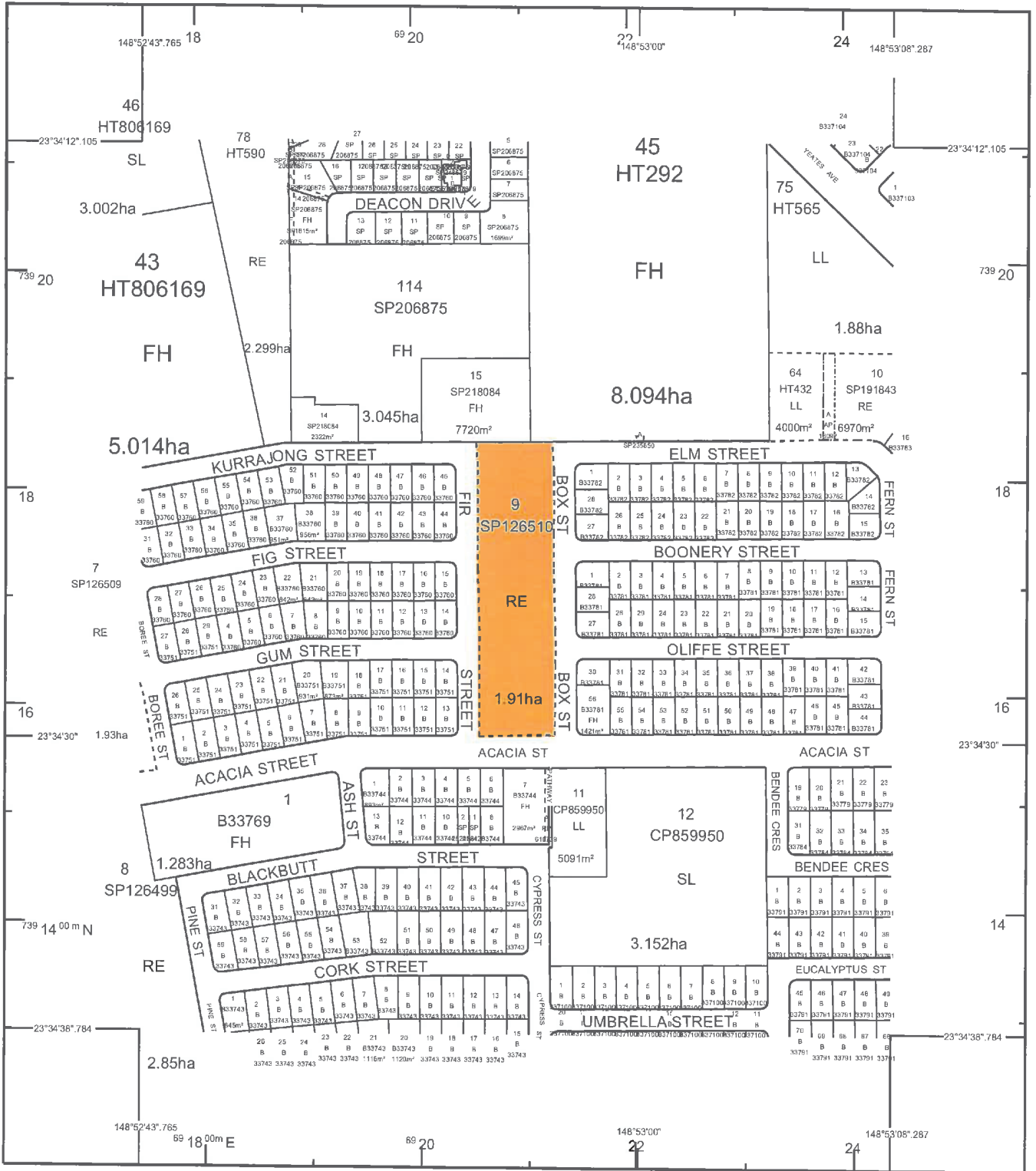


Queensland Government

(c) The State of Queensland, (Department of Natural Resources and Mines) 2014.



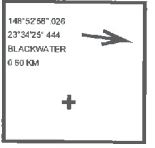
For further information on SmartMap products visit <http://nrd.qld.gov.au/property/mapping/biimap>



STANDARD MAP NUMBER  
 8650-11344



MAP WINDOW POSITION & NEAREST LOCATION



SUBJECT PARCEL DESCRIPTION	
DCDB	9/SP126510
Lot/Plan	1.91ha
Area/Volume	RESERVE
Tenure	CENTRAL HIGHLANDS REGIONAL
Local Government	BLACKWATER
Locality	BLACKWATER
Parish	HUMBOLDT
County	36811346
Segment/Parcel	

CLIENT SERVICE STANDARDS	
PRINTED (dd/mm/yyyy)	08/08/2014
DCDB	07/08/2014
Users of the information recorded in this document (the Information) accept all responsibility and risk associated with the use of the Information and should seek independent professional advice in relation to dealings with property.	
Despite Department of Natural Resources and Mines (DNRM)'s best efforts, DNRM makes no representations or warranties in relation to the Information, and, to the extent permitted by law, exclude or limit all warranties relating to correctness, accuracy, reliability, completeness or currency and all liability for any direct, indirect and consequential costs, losses, damages and expenses incurred in any way (including but not limited to that arising from negligence) in connection with any use of or reliance on the Information	
For further information on SmartMap products visit <a href="http://nrw.qld.gov.au/property/mapping/blinmap">http://nrw.qld.gov.au/property/mapping/blinmap</a>	

**SmartMap**  
 An External Product of  
 SmartMap Information Services  
 Based upon an extraction from the  
 Digital Cadastral Data Base



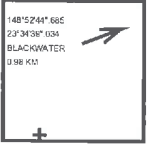
(c) The State of Queensland,  
 (Department of Natural  
 Resources and Mines) 2014.



STANDARD MAP NUMBER  
 8650-11344



MAP WINDOW POSITION & NEAREST LOCATION



SUBJECT PARCEL DESCRIPTION	
DCDB	8/SP126499
Lot/Plan	2.85ha
Area/Volume	RESERVE
Tenure	CENTRAL HIGHLANDS REGIONAL
Local Government	BLACKWATER
Locality	BLACKWATER
Parish	HUMBOLDT
County	
Segment/Parcel	39815/198

CLIENT SERVICE STANDARDS

PRINTED (dd/mm/yyyy) 08/08/2014

DCDB 07/08/2014

Users of the information recorded in this document (the Information) accept all responsibility and risk associated with the use of the Information and should seek independent professional advice in relation to dealings with property.

Despite Department of Natural Resources and Mines (DNRM)'s best efforts, DNRM makes no representations or warranties in relation to the Information, and, to the extent permitted by law, exclude or limit all warranties relating to correctness, accuracy, reliability, completeness or currency and all liability for any direct, indirect and consequential costs, losses, damages and expenses incurred in any way (including but not limited to that arising from negligence) in connection with any use of or reliance on the Information

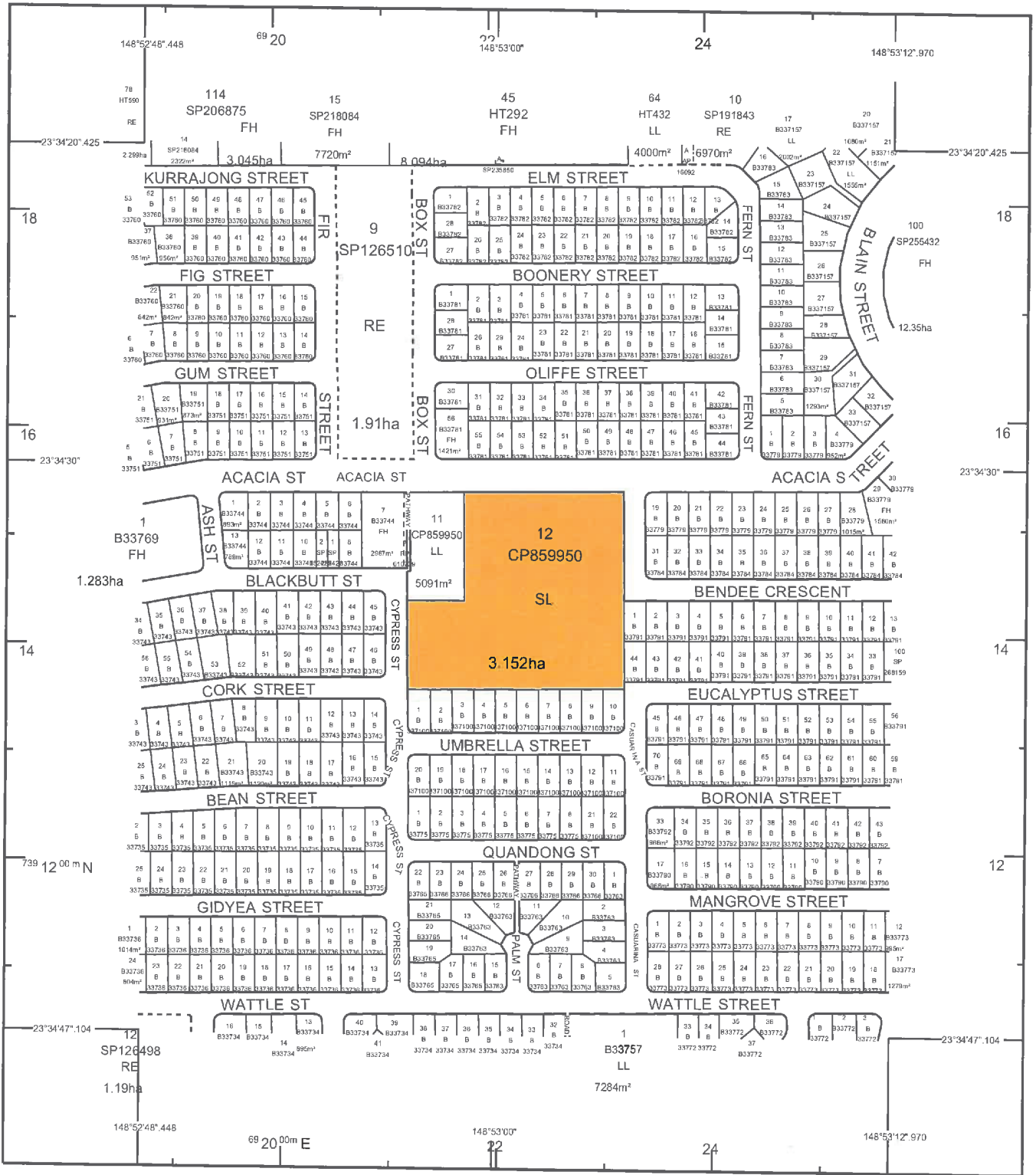


**SmartMap**  
 An External Product of  
 SmartMap Information Services  
 Based upon an extraction from the  
 Digital Cadastral Data Base



Queensland Government  
 (c) The State of Queensland,  
 (Department of Natural Resources and Mines) 2014.

For further information on SmartMap products visit <http://nsw.qld.gov.au/property/mapping/blnmap>



STANDARD MAP NUMBER  
 8650-11344



MAP WINDOW POSITION & NEAREST LOCATION



SUBJECT PARCEL DESCRIPTION	
DCDB	12/CP859950
Lot/Plan	3.152ha
Area/Volume	STATE LAND
Tenure	CENTRAL HIGHLANDS REGIONAL
Local Government	BLACKWATER
Locality	BLACKWATER
Parish	HUMBOLDT
County	39812/215
Segment/Parcel	

CLIENT SERVICE STANDARDS

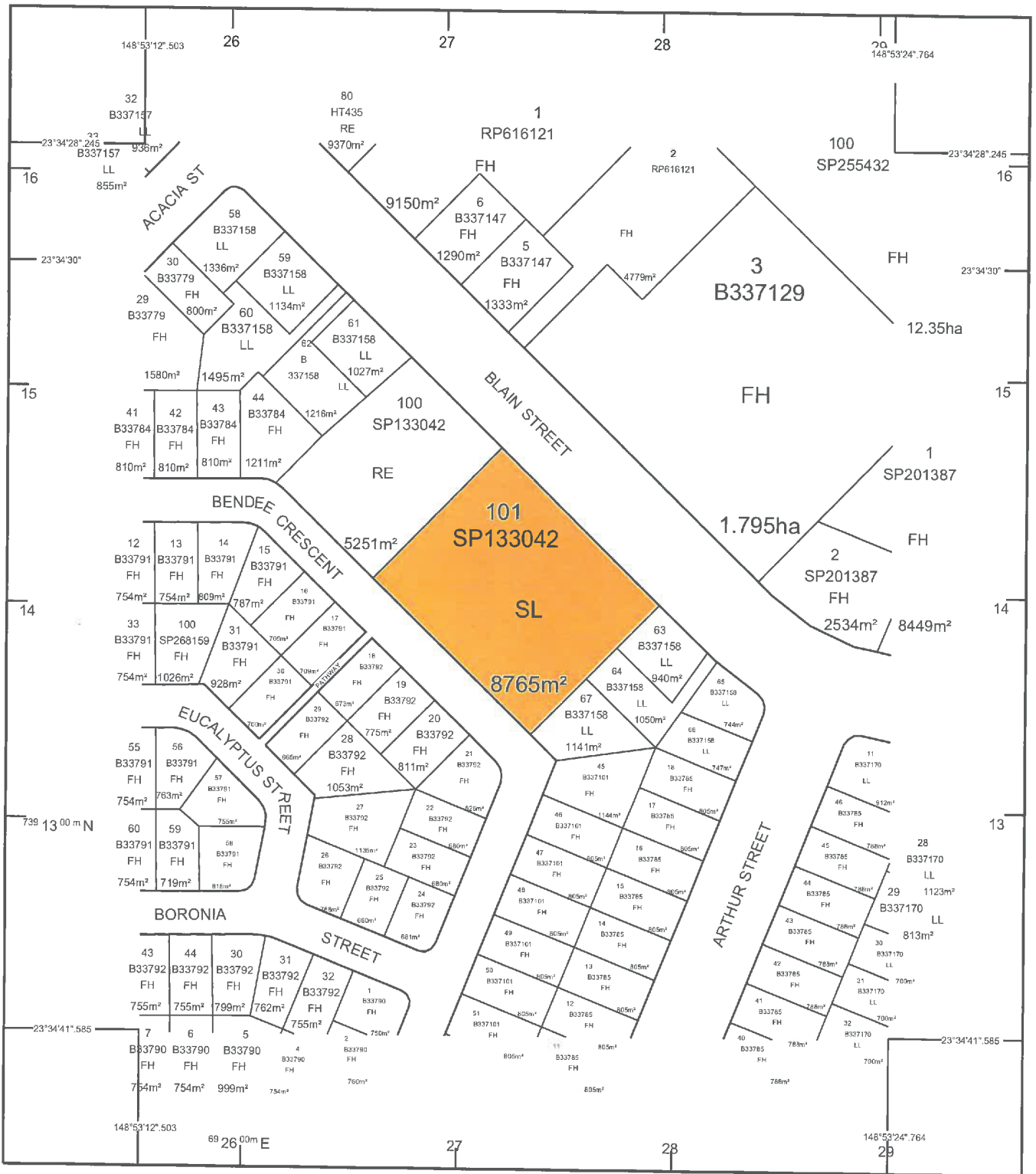
PRINTED (dd/mm/yyyy)	06/08/2014
DCDB	07/08/2014
Users of the information recorded in this document (the Information) accept all responsibility and risk associated with the use of the Information and should seek independent professional advice in relation to dealings with property.	
Despite Department of Natural Resources and Mines (DNRM)'s best efforts, DNRM makes no representations or warranties in relation to the Information, and, to the extent permitted by law, exclude or limit all warranties relating to correctness, accuracy, reliability, completeness or currency and all liability for any direct, indirect and consequential costs, losses, damages and expenses incurred in any way (including but not limited to that arising from negligence) in connection with any use of or reliance on the Information.	
For further information on SmartMap products visit <a href="http://nrv.qld.gov.au/property/mapping/online">http://nrv.qld.gov.au/property/mapping/online</a>	



An External Product of  
 SmartMap Information Services  
 Based upon an extraction from the  
 Digital Cadastral Data Base



Queensland  
 Government  
 (c) The State of Queensland,  
 (Department of Natural  
 Resources and Mines) 2014.



STANDARD MAP NUMBER  
 8650-11344



MAP WINDOW POSITION &  
 NEAREST LOCATION



**SUBJECT PARCEL DESCRIPTION**

DCDB Lot/Plan	101/SP133042
Area/Volume	8765m <sup>2</sup>
Tenure	STATE LAND
Local Government	CENTRAL HIGHLANDS REGIONAL
Locality	BLACKWATER
Parish	BLACKWATER
County	HUMBOLDT
Segment/Parcel	39812/218

**CLIENT SERVICE STANDARDS**

PRINTED (dd/mm/yyyy)	08/08/2014
DCDB	07/08/2014
Users of the information recorded in this document (the Information) accept all responsibility and risk associated with the use of the Information and should seek independent professional advice in relation to dealings with property.	
Despite Department of Natural Resources and Mines(DNRM)'s best efforts, DNRM makes no representations or warranties in relation to the Information, and, to the extent permitted by law, exclude or limit all warranties relating to correctness, accuracy, reliability, completeness or currency and all liability for any direct, indirect and consequential costs, losses, damages and expenses incurred in any way (including but not limited to that arising from negligence) in connection with any use of or reliance on the Information	
For further information on SmartMap products visit <a href="http://nrlw.qld.gov.au/property/mapping/olnmap">http://nrlw.qld.gov.au/property/mapping/olnmap</a>	

**SmartMap**

An External Product of  
 SmartMap Information Services  
 Based upon an extraction from the  
 Digital Cadastral Data Base



Queensland  
 Government

(c) The State of Queensland,  
 (Department of Natural  
 Resources and Mines) 2014.





STANDARD MAP NUMBER  
 8650-11343



MAP WINDOW POSITION & NEAREST LOCATION



SUBJECT PARCEL DESCRIPTION	
DCDB Lot/Plan	14/SP246036
Area/Volume	1.929ha
Tenure	RESERVE
Local Government	CENTRAL HIGHLANDS REGIONAL
Locality	BLACKWATER
Parish	BLACKWATER
County	HUMBOLDT
Segment/Parcel	63008/155

CLIENT SERVICE STANDARDS	
PRINTED (dd/mm/yyyy)	07/08/2014
DCDB	06/08/2014
Users of the information recorded in this document (the Information) accept all responsibility and risk associated with the use of the Information and should seek independent professional advice in relation to dealings with property.	
Despite Department of Natural Resources and Mines (DNRM)'s best efforts, DNRM makes no representations or warranties in relation to the Information, and, to the extent permitted by law, exclude or limit all warranties relating to correctness, accuracy, reliability, completeness or currency and all liability for any direct, indirect and consequential costs, losses, damages and expenses incurred in any way (including but not limited to that arising from negligence) in connection with any use of or reliance on the Information	
For further information on SmartMap products visit <a href="http://nrw.cld.gov.au/property/mapping/olnmap">http://nrw.cld.gov.au/property/mapping/olnmap</a>	

**SmartMap**  
 An External Product of  
 SmartMap Information Services  
 Based upon an extraction from the  
 Digital Cadastral Data Base



(c) The State of Queensland,  
 (Department of Natural  
 Resources and Mines) 2014.



STANDARD MAP NUMBER  
**8650-11343**



MAP WINDOW POSITION & NEAREST LOCATION



SUBJECT PARCEL DESCRIPTION	
DCDB	1/B33758
Lot/Plan	6366m²
Area/Volume	RESERVE
Tenure	CENTRAL HIGHLANDS REGIONAL
Local Government	BLACKWATER
Locality	BLACKWATER
Parish	HUMBOLDT
County	39820/16
Segment/Parcel	

CLIENT SERVICE STANDARDS

PRINTED (dd/mm/yyyy) 08/08/2014  
 DCDB 07/08/2014

Users of the information recorded in this document (the Information) accept all responsibility and risk associated with the use of the Information and should seek independent professional advice in relation to dealings with property.

Despite Department of Natural Resources and Mines (DNRM)'s best efforts, DNRM makes no representations or warranties in relation to the Information, and, to the extent permitted by law, exclude or limit all warranties relating to correctness, accuracy, reliability, completeness or currency and all liability for any direct, indirect and consequential arising, losses, damages and expenses incurred in any way (including but not limited to that arising from negligence) in connection with any use of or reliance on the Information

For further information on SmartMap products visit <http://nrv.qld.gov.au/property/mapping/blinmap>

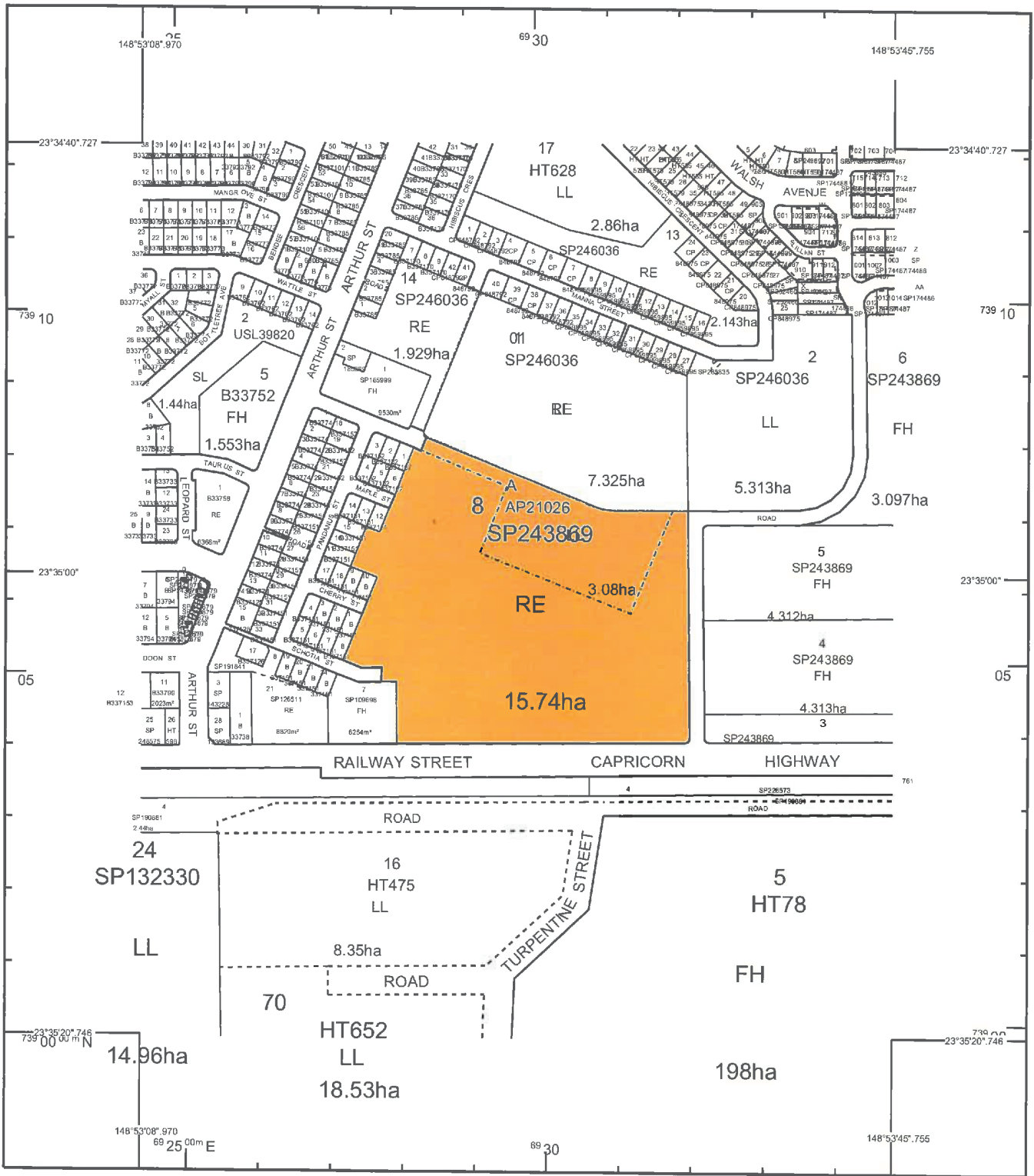


An External Product of SmartMap Information Services  
 Based upon an extraction from the Digital Cadastral Data Base



Queensland Government  
 (c) The State of Queensland, (Department of Natural Resources and Mines) 2014.

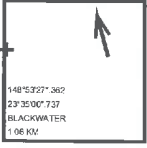




STANDARD MAP NUMBER  
 8650-11342



MAP WINDOW POSITION & NEAREST LOCATION



SUBJECT PARCEL DESCRIPTION	
DCDB	8/SP243869
Lot/Plan	15.74ha
Area/Volume	RESERVE
Tenure	CENTRAL HIGHLANDS REGIONAL
Local Government	BLACKWATER
Locality	BLACKWATER
Parish	HUMBOLDT
County	63008/159
Segment/Parcel	

CLIENT SERVICE STANDARDS	
PRINTED (dd/mm/yyyy)	12/08/2014
DCDB	11/08/2014
Users of the information recorded in this document (the Information) accept all responsibility and risk associated with the use of the Information and should seek independent professional advice in relation to dealings with property.	
Despite Department of Natural Resources and Mines (DNRM)'s best efforts, DNRM makes no representations or warranties in relation to the Information, and, to the extent permitted by law, exclude or limit all warranties relating to correctness, accuracy, reliability, completeness or currency and all liability for any direct, indirect and consequential costs, losses, damages and expenses incurred in any way (including but not limited to that arising from negligence) in connection with any use of or reliance on the Information	
For further information on SmartMap products visit <a href="http://nrm.qld.gov.au/property/mapping/blinmap">http://nrm.qld.gov.au/property/mapping/blinmap</a>	

**SmartMap**  
 An External Product of  
 SmartMap Information Services  
 Based upon an extraction from the  
 Digital Cadastral Data Base



(c) The State of Queensland,  
 (Department of Natural  
 Resources and Mines) 2014.

3758 V0 REGISTERED Recorded Date 15/06/2000 10:22 Page 1 of 1 Not To Scale

